

# Lovington Church of England Primary School

Lovington, Castle Cary, Somerset, BA7 7PX  
Tel: 01963 240305



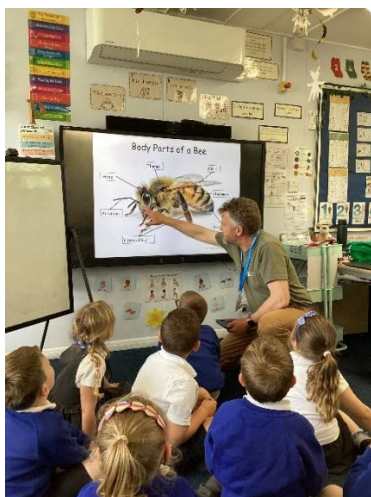
E-Mail: [office@lovington.ppat365.org](mailto:office@lovington.ppat365.org)  
Website: <https://lovingtonprimary.co.uk>

Headteacher: Mrs Emma Marshall BA Honours, PGCE

24.04.026

It has been wonderful to welcome the children back to school, and we are looking forward to a busy, engaging, and productive term ahead. The positive energy around the school has been evident, with pupils settling quickly into their routines and approaching their learning with enthusiasm and curiosity. We are excited about the many opportunities this term will bring, both in the classroom and beyond, and we look forward to supporting every child as they continue to grow in confidence, resilience, and achievement.

Yesterday, the school was visited by Peter from Better Planet Education. He spoke with Pippin class about bees and minibeasts, highlighting the importance of them for our environment. The children learnt lots of interesting facts including how bees only live for 5-6 weeks, and how they choose a queen bee. In Russet Class, Peter spoke about different types of renewal energy, including solar panels and wind turbines. He highlighted the benefits of these in contrast to fossil fuels. He also discussed the importance of recycling and the impact on the environment and animals if we don't change our habits. Thank you Peter for visiting us!



## New Water Wall for Pippin Class



We are delighted to be able to share with you the new Water Wall that has been installed for Pippin Class. **We are extremely grateful to the PTA who very kindly donated the money to cover the cost of this new piece of equipment.** We are sure the children will enjoy interacting with this over the coming weeks. Thank you to the PTA for all their support and fundraising efforts.



## Well Done Medals

**Pippin Class – Independence** – Kelcee for her continued hard work in English work, showing more independence in lessons. Well done Kelcee.

**Bramley – Motivation** – Coen for improved use of fronted adverbials and expanded noun phrases. Well done Coen. Keep it up!

**Russet Class – Independence** – Harry for working hard this week to multiply fractions by whole numbers. Well done Harry.

Headteacher: Mrs E. Marshall  
Email: [office@lovington.ppat365.org](mailto:office@lovington.ppat365.org)

## Reading Certificates

**Pippin Class:** Molly 125

**Bramley Class:** Henry 50, Izzy 75, Isolda 100, Angus 100, Orla 100, Barney 150, Rose 200, Alex 200, Roksana 300

**Russet Class:** Raff 150, Arthur 150, Amaia 200, Sandra 300



### Kindness Cup

Bertie for being kind and thoughtful during after school club. Thank you Bertie.

### Breakfast Club and After School Club

Please do look out for the letter regarding after school club provision, that is being sent via Parentmail today.

We now have a dedicated email address for Breakfast and After School Clubs. Please send all booking forms to this new address:

[asc@lovington.ppat365.org](mailto:asc@lovington.ppat365.org)

### Safeguarding

At Lovington Primary School, the safety and wellbeing of all our pupils is our top priority. If you have any concerns about a child's welfare, please speak to our Designated Safeguarding Lead (DSL), Mrs Marshall or Deputy DSLs or Mrs Small. Working together, we can ensure every child feels safe, supported, and happy at school.



### Thank You and Goodbye

Today, we say goodbye to Miss Lappin. We take this opportunity to thank her for everything she has done for Lovington Primary and wish her every success in the future, as she embarks on a new chapter.

## Attendance

This week our attendance is 93.3%. This is significantly below what we would expect. Please see the table below highlighting the impact absence has on a child's learning:

#### **Above 97%: Less than 6 days absence a year**

Excellent attendance! These pupils will almost certainly get the best grades they can, leading to better prospects for the future. Pupils will also get into a habit of attending school which will help in the future.

#### **95%: 10 days absence a year**

These pupils are likely to achieve good grades and form a habit of attending school regularly. Pupils who take a 2 week holiday every year can only achieve 95% attendance.

#### **90%: 19 days absence a year**

Pupils in this group are missing a month of school per year. The Government classes pupils in this group as "Persistent Absentees", and it will be almost impossible to keep up with work. Parents of pupils in this group could also face the possibility of legal action being taken by the Local Authority.

#### **85%: 29 days absence a year**

Pupils in this group are missing six weeks of school per year and will be monitored closely. It will be very difficult for them to keep up with work and they are unlikely to do their best.

## Upcoming Dates

### New date added

Y3 Body Control Ansford Academy	Tuesday 28 <sup>th</sup> April at 12.45pm
Year 6 SAT's Week	11 <sup>th</sup> - 14 <sup>th</sup> May
Last day of term	Friday 22 <sup>nd</sup> May
Inset Day	Monday 1 <sup>st</sup> June
Return to School	Tuesday 2 <sup>nd</sup> June
Year 4 Multiplication Check	2 <sup>nd</sup> - 12 <sup>th</sup> June
Year 1 Phonics Screening	8 <sup>th</sup> - 12 <sup>th</sup> June

Sports Day (weather permitting)	Tuesday 16 <sup>th</sup> June
Year 5 Ansford Academy Experience Day	Monday 6 <sup>th</sup> July 9.30 – 3pm
Sports Day (reserve)	Tuesday 7 <sup>th</sup> July
KS2 Performance	Wednesday 15 <sup>th</sup> July at 6pm
Leavers Service	Tuesday 21 <sup>st</sup> July at 9.30am
Last Day of Term	Tuesday 21 <sup>st</sup> July
Return to School	Monday 7 <sup>th</sup> September